

March 2021 ISSUE: 531

£1 when sold

L[★]DE STAR



NEWS AND VIEWS FROM LODE WITH LONGMEADOW

<http://www.lode.org.uk/lodestar.html>

WHAT'S WHERE IN LODE STAR

3. Spring is on its way!
4. Lode Parish Council
5. PRIORITY POST BOXES
6. Covid-19 Vaccination
7. Vaccination Priority Groups
8. Red2Green Notes
9. Thank Yous
10. Cambs Fire & Rescue Sudoku
11. Patients Participation Group
12. Good News EA Air Ambulance
13. Anglesey Abbey notes
14. National Service
16. The current situation
17. District Councillors' report
18. Public Transport Matters
19. The Charity of Strangers Sudoku solution
20. Walk your Walk
21. St James' Plant Stall Village Freecycle
22. On the mean streets of Cambridge Mobile Library news
23. Mothers Union
24. Recipes from the Silver Bank
25. Litter picking 2021 Neighbourhood Watch
26. St James' Church pages
27. Easter Lilies for St James'
28. Outside Information



WHAT'S ON WHEN

LC Lode Chapel; StJ St James' Church; FH Passage Hall;
TS The Shed; BSSC B'shm Sports & Social Club;
BVC Bottisham Village College

March

- 1 St David's Day
- 3 World Wildlife Day
- 4 World Book Day
- 8 International Woman's Day
- 8 **Lode Parish Council**
- 14 Mothering Sunday / Mothers Day

Copy date for April's Lode Star

- 17 St Patrick's Day
- 19 Red Nose Day
- 26 **District Councillor's Surgery** (p17)

BOTTISHAM MEDICAL PRACTICE

Tunbridge Lane, Bottisham, C25 9DU

www.bottishammedicalpractice@nhs.net

Appointment/Pharmacy/Enquiries:

01223 810030

MONDAY to FRIDAY 8.30am-6.00pm

(Pharmacy closed 12noon-2pm)



It's on its way!

Yep, I'm talking about Spring. Like many others it's my favourite time of the year and it's easy to see why. With spring comes hope, beauty and new beginnings.



Penny wrote a wonderful piece about 'wintering' and the idea that, like nature, we have quieter times to retreat inside, well spring is the time to begin to shine, to wake up and engage with life.

The time between Imbolc (1st-2nd Feb) and the Spring Equinox (21st March) is a time to gently unfold and begin to wake up, there's no rush, let nature guide you and watch for the first flowers, the lengthening days and buds on the trees.

The spring equinox is a time for celebrating life, fertility, renewal, and rebirth. It's also a time of endings and letting go so with this in mind I'll be having a good sort out in the house and garden, I'll be planting my seeds and starting new projects.

Issue: 531 March 2021

Here are 5 ways you can improve your wellbeing celebrating the arrival of spring:

1. Get out in the garden - [https://](https://www.gardenersworld.com/what-to-do-now-march/)

www.gardenersworld.com/what-to-do-now-march/

2. Work out what you'd like to do this year and set achievable goals (I know COVID-19 doesn't help)
3. Pamper yourself. Maybe soak in a flower petal salt bath or give yourself a pedicure to refresh and renew
4. Try a nature-inspired guided meditation there are plenty to try on YouTube
5. Try a mindful* walk through our beautiful landscape

Happy Spring Equinox everyone!
Teresa

** a walk without a destination in mind, go with the flow and let the moment guide you. Take in the smells, sights, sounds and feelings around you.*

The purpose of LODE STAR is to serve the WHOLE parish by circulating information free to every household in LODE and LONGMEADOW eleven times a year

Please could all items for inclusion in the APRIL 2021 issue of Lode Star reach Susan Swannell (address below or lodestar.lode@btinternet.com) by SUNDAY 14 MARCH (earlier if possible)

EDITOR:..... VACANT
DISTRIBUTION:..... IAN FAULKNER, 28 FAIRHAVEN CLOSE, CB25 9HG 811963
TREASURER:..... JEFF KEMPSTER, 19 ABBEY LANE, LODE CB25 9EP 812194
ADVERTISING & PRODUCTION:.. SUSAN SWANNELL, 5 ABBEY LANE, LODE 811584
COVER PHOTO: FAY BAWTREE
PRINTERS:..... BURWELL COMMUNITY PRINT CENTRE A social enterprise, training & supporting adults with learning disabilities, providing quality design & print. www.burwellprint.co.uk

OPINIONS EXPRESSED IN LODE STAR ARE NOT NECESSARILY THOSE OF THE EDITORS
NOR DO THE EDITORS ACCEPT ANY RESPONSIBILITY FOR CLAIMS MADE IN ADVERTISEMENTS

Lode Parish Council News

Potential Flooding

We have reported thirty blocked road drains to the County Council. Most were on Lode Road and Quay Road, with others in Station Road, High Street, Northfields and Longmeadow.

A healthy drain should have clear water visible about two to three feet below the grating as there is a U-bend before the storm water pipe network.

Blockages include leaves and sticks from trees, and mud and stones from verges. The County Council sends lorries around occasionally to clear them, but maybe not often enough.

The storm water appears to be pumped to Bottisham by the building in Station Road which also pumps domestic waste water.

Most of the open land in the parish is less than five metres above sea level and excess water drains into ditches.

This water is eventually pumped electrically into the River Cam at Upware. This includes all the land in the parish to the north of the tarmac path across from Longmeadow, and land to the north and west of Quay Water and Bottisham Lode. It also includes the grounds of Anglesey Abbey, whose drainage water passes out under Quay Water in a tunnel at the western end of the gardens.

Reporting Highway Faults

The website [highwaysreporting.cambridgeshire.gov.uk](https://www.highwaysreporting.cambridgeshire.gov.uk) may be used to report problems outside your home, or elsewhere.

These include potholes, uneven road and pavement surfaces, damaged kerbs and road edges, flooding, manholes and gratings, signs, lines and street furniture such as bollards, signs, fences, unauthorised signs, street and traffic lights, hedges and trees overhanging pavements, roads etc.

There is a map to plot the locations and a menu to write down details, which stay on the map for others to see. These are acknowledged and progress can be checked.

Problems such as missing gratings, damaged or badly leaning poles and signs, debris, trees and mud on roads etc. should be reported to the Police as these can be dangerous to road users.

Damaged grass verges within our 30mph limits may be reported to the Parish Council for repair and protection.

LODE PARISH COUNCIL

CHAIRMAN

Robert Stevens.....C.811643
51 Northfields
Teresa Crickmar07812 243 732
9 Swaffham Road
Fran PlattenC.813016
Fen Farm, Lode Fen
Clive Purbrook.....07885 690 781
Gally's Farm, Lug Fen Drove
Rob SmallC.812626
32 High Street
Meleena Walsh.....C.813664
23 Northfields

CLERK

Jonathan Giles 07789 012 761
86 High Street, Bottisham CB25 9BA
lodeparishclerk@gmail.com

Extra Dog Waste Bins

We will be installing three new dog waste bins so that dog owners are always within about 200 metres of a bin when within the built-up parts of the parish. These are planned to be in

- Longmeadow (opposite the footpath from Millards Lane),
- Lode Road (by the footpath from Abbey Lane) and
- Station Road (by the road to the cemetery).

The District Council will not collect from bins away from roads so it is not feasible for bins to be placed in remote locations.



It is illegal for dog mess to be left on any street, path or land in the District. This applies even if a dog is not seen making it, which can happen if it is off-lead. Bags should be put in the bins or taken home.

Trees

The County Council has planted a replacement tree at the entrance to Northfields, three trees in the cemetery and two in the play area.

These are to compensate in some way for the silver maple tree it felled last year without consultation with us or the District Council.

It has also promised us 15 other trees to make up for trees removed between Quay and Bottisham on the A1303, or to cover our costs if we buy and plant them instead.

Plastic and Biodegradable Bags

Further to last month's section about waste collection, plastic and plastic-like bags should not be put in

either the blue or green bin as they will be screened-out and sent to landfill.

Compostable and biodegradable bags decompose far too slowly, but composting them at home may be possible

given enough time. Stout brown paper bags are available at many supermarkets to wrap food waste, if not enough newspaper is to hand, and this should be put in the green bin. The are collection points for clean plastic (polythene) bags inside many supermarkets.

Robert Stevens, Chairman



Remember

If you need to post a **Covid-19 test** please use a postbox marked with a **PRIORITY** sticker as these are emptied more often by trained Royal Mail staff.

So in Lode you should use the High Street or Longmeadow box, **not** the one on Lode Road by Northfields.

Corinne,
Lode Post Office



COVID-19 Vaccination Programme

Update from Bottisham Medical Practice

In the last edition of the magazine we were pleased to announce the start-up of the COVID-19 vaccination programme in conjunction with our local Primary Care Network.

At the time of writing this we can confirm that we have now vaccinated over 5,000 patients within the network which is an amazing achievement in just three weeks.

Staff across the Network have come together to deliver a programme at a large scale in order to achieve this and are hugely grateful for all the staff across the network who have worked so hard to get our most vulnerable patients vaccinated. We could also not of done this without the help of our dedicated volunteers who played a key part in supporting the logistics of running the clinics and we thank you all.

Cohorts completed so far are cohorts 1-4 which includes all those over 70 years old, residents and staff working in care homes, all frontline healthcare workers and patients in the high risk 'shielding' category also known as clinically extremely vulnerable.

Housebound patients within the at risk groups will be done by the District Nursing team in the coming weeks.

The order in which the vaccine is offered to patients is decided by Public Health England and the Joint committee on vaccination and immunisation (JCVI). We have no control over whom we are able to offer the vaccine to and have to strictly adhere to the order of priority.

The next group of patients will be cohorts 5 & 6 which are all those

over 65 years of age and those aged 18-65 years of age with at-risk health conditions. As soon as we have a date for the next vaccination clinics these will be publicised.

Along with Stevenage there are now additional local hubs in the area including the Grafton Centre and Newmarket racecourse. It continues to be the case that patients could be called to have vaccinations at these local hubs as well as via the surgery, we have no choice over where you are invited to be vaccinated.

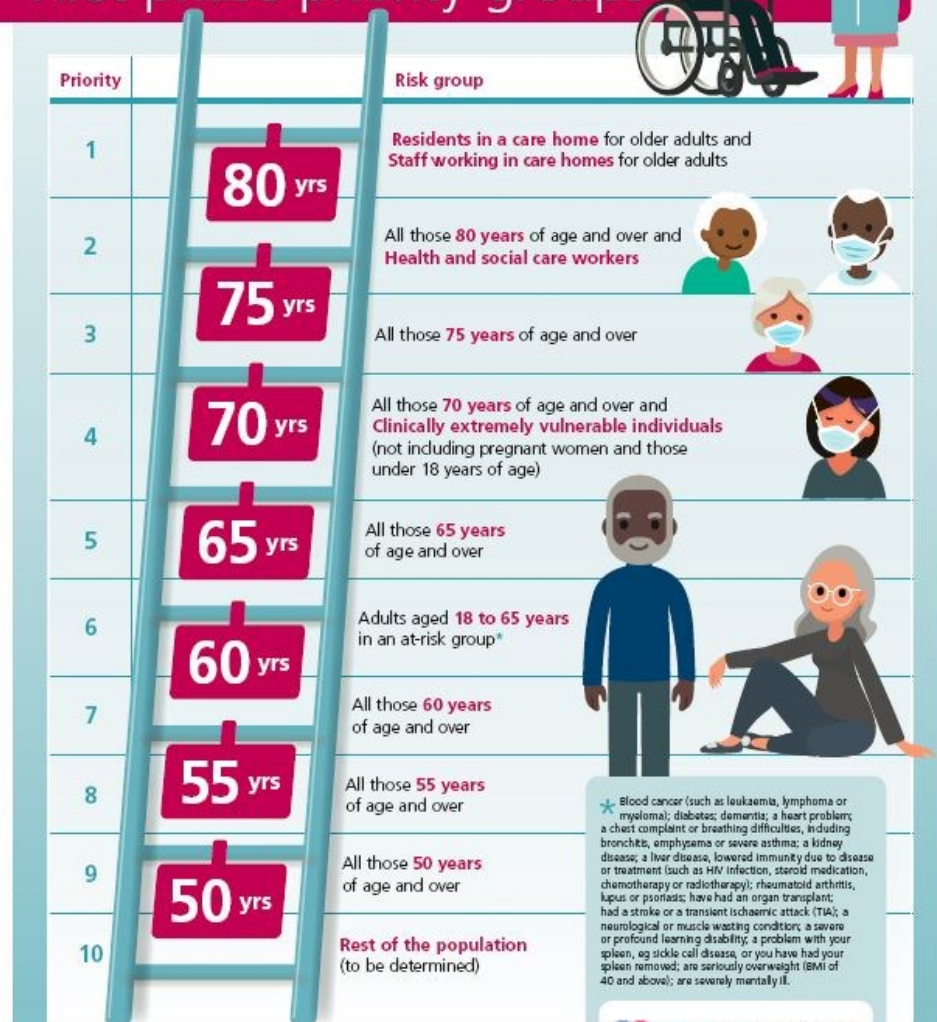
Importantly, patients aged 70 years and over and those within the 'shielding' group who have not yet been vaccinated against COVID and who would like to be are being asked to contact the NHS to arrange a vaccination. The easiest way to arrange a vaccination is through the national booking service which can be accessed at www.nhs.uk/covid-vaccination. The system allows patients to choose a time slot and location that suits them. Anyone unable to book online can call 119 free of charge, anytime between 7am and 11pm seven days a week.

For further information and Q&As regarding the vaccines please visit our website <https://www.bottishammedicalpractice.nhs.uk/covid-19-vaccination-programme>



COVID-19 vaccination

First phase priority groups



Red2Green supports adults with learning disabilities and Autism Spectrum Disorder through our Options activities or our Aspirations learning programme. We have two sites, Harvey's Barn in Swaffham Bulbeck and the Community Café and Garden at Lode Road in Bottisham.

During this lockdown **Red2Green** has continued to support those who need our services the most. Clients and staff are busy making homemade crafts to sell, tending to the plants and playing games throughout the week.

We are also taking walks and when the weather isn't good the learners are making use of the extra space at the two Barns, where they are playing indoor games such as Boules, Ring Toss, Shotput, Badminton and Tennis using giant rackets and a soft ball/shuttlecock.

For those who do not attend we are running online services, making telephone calls and sending them activity packs.

Community Café and Garden

We are continuing to keep the community café closed, as we need to keep our learners safe. We do though have plenty of plants to sell and put these out on an honesty table during the week.

In addition to the plants we have keyrings, pin cushions, peg bags and many more craft items our learners have made for sale. Go to www.red2green.org to order online or visit us whilst out for a walk.

Cogs2Computers:

Learners are currently working on the *Then and Now* project. This is looking at what happened in the development of technology in the year, or even month, they were born and creating a project around it and comparing it to what we have now. This is happening in the different bubbles at both **Red2Green** sites

and at home for learners that are unfortunately not with us right now. We look forward to seeing what they come up with.

Red2Green is still working with Swaffham Bulbeck primary school, Arm and The Centre for Computing History in Cambridge in the planning of future activities which involve International Women's day in March, coding and gaming in the following months. We are so excited to have these connections and to deliver this fresh and exciting project.

We are also looking for people to have a 5 minute chat with us about their use of technology throughout the Covid-19 pandemic and share their experiences. Please email info@red2green.org or leave a message with your bubble if you could help us or even spread the word to people who may be interested.

Ways you can support us:

Red2Green provides a vital service for those that we support and their families. The COVID-19 restrictions has made it tougher, and we are so grateful to everyone who supports us, however small.

- * Buy your plants and gifts from us and tell your friends!
- * Do your online shopping through **AmazonSmile** and the giving machine, setting your chosen charity to 'Turning the Red Lights Green'

Donate at www.justgiving.com/red2green

For once my woolly head is clear and my hands behaving.

To all those who have supported me over the last few months and more (it must seem like forever) I would like to say how lucky I am to have come to Lode to live. I want to begin by thanking you all for what you have done for someone in trouble. This is truly a wonderful, exceptional community.

You have ordered and bought food for me, very difficult at times. You have cooked delicious meals for me, coping with all my problems of sore mouth etc., lending your crocks and having to find them again. Some have washed for me, others lent me their pyjama bottoms when my legs got sore.

Coral has been my chauffeur to appointments, collecting me whatever the time. Some have stitched for me. Thank you Julie and Gill. Some have gardened for me. The chapel lent its blue bin, and so



many more kindnesses I have received. Who else but Julie could face my feet?

More than anyone else, Lucy has been my rock.

Despite having a family to care for and home-school, and being involved in setting up a business. I know she found it hard, but she was always quick to reassure me when things went wrong and was incredible in every way.

If ever there was an example needed of true Christian charity and humanity shown to a neighbour, it's here in Lode, and you make me feel very sad that I didn't do more to help others myself.

Right now I'm waiting to hear what's happening to me and where I'll be. It's very hard that I may not see you again. You have been my lifeline. Thank you from the bottom of my heart.

Muriel Cordell, 1 February 2021

Muriel moved to Queen's Court on 15 February

Thank You Muriel

We moved into the village in December 2005. It was one of those really grim days where everything looks grey, damp and uninviting. It could only get better! Not long after we'd unpacked, Muriel Cordell, be-decked in cheerful scarf and cardigan, knocked on our door to welcome us to Lode.

From that moment Muriel, you were a fixture in our lives. You were one of the first people to see both our children only a few hours after they were born. We've had more cups of tea together than I can possibly count.

We will remember you through the postcards you sent from every corner of the world, through the plants and cuttings in your garden that now populate our garden and through the many interesting artifacts and toys you so generously gave to the boys. I have always maintained that we had the best view in the village, overlooking your lovely house and beautiful, colourful border.

We hope you enjoy your time in Queen's Court. We were very lucky to have you as our neighbour. We will miss you. Lucy, Nick, Jack and Tom

Another month crawls by – where is the tunnel ? Despite the continuing curtailing Covid constraints, life goes on for CFRS.

These days, CFRS is much more than just a 'fire brigade' – as a 'first responder' its remit has expanded to encompass all manner of personal and corporate emergencies. Crews are highly trained, not only in dealing with fires, cats in trees and cows in ditches, but with life-threatening personal situations. Any one of our marvellous emergency services could be first on the scene. However, I am concerned with the ability of CFRS to continue its work in and for our communities – this boils down to Leadership, Professionalism, Manning and Training. Of these, I would contend that Manning is the first step – all the others fall into line through motivation and commitment.

CFRS is looking to recruit new firefighters, both full time and 'on call' to continue the process of maintaining top flight teams of well trained and professional personnel across the County.

Why not **enquire now** to find out how to put your foot on the first rung of the ladder at the start of what could be a most rewarding career.

Go on ...Do It Now !

And whilst talking of 'now' – how about **testing those smoke alarms** – better safe than very sorry. The aftermath and consequences of a fire are devastating. To repeat what I said in the last issue; Safe and Well visits by CFRS are available – be confident that your home is safe and you are well protected.

Michael White

PUZZLE 167a

The object of the puzzle is to fill in the remaining squares with the numbers from 1 to 9 so that:

Each row contains all the numbers from 1 to 9.

Each column contains all the numbers from 1 to 9.

Each 3 x 3 box contains all the numbers from 1 to 9.

Note that each of the numbers from 1 to 9 must appear just once in each row, once in each column and once in each 3 x 3 box.

			9					
	6	7	2				1	
1		3					8	6
				9			5	4
2		1				6		7
5	3			4				
3	1					7		8
	9				8	1	4	
					7			

LODE 10 STAR

Solution on page 19

News from Bottisham Medical Practice Patients' Participation Group

Covid Vaccinations:

These are proceeding well, due to the hard work of the staff, who still have their usual patient care duties to do, and the volunteer marshals. We owe them all our thanks.

It has been a major effort to organise finding and equipping suitable premises and getting the supply of the vaccines.

GP practices are grouped into Primary Care Networks, with Bottisham being in the Cambridge North City along with another five practices including the East Barnwell Health Centre, hence using it as a vaccination site.

See further information in this edition of the magazine from the Practice Partners.

Whether having had the vaccine or not we are still advised to follow government guidelines and remember HANDS : FACE : SPACE.

The Practice gave a fond farewell to Dr Higham on 5 February, who has now retired after nearly 21 years here

at the practice. He will be very much missed by both staff and patients. We would like to wish him well in his retirement.

We would like to welcome our two new GPs Dr Leverett and Dr Kanagasabapathy to the practice.

Dispensary:

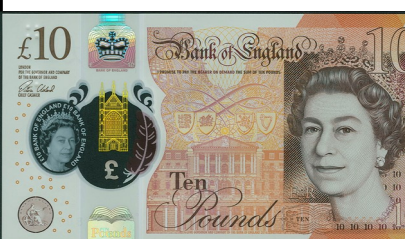
Please remember the practice are still operating a five-day turnaround for repeat medication to ensure safe working in the dispensary and manage increased demands.

Flu vaccinations: The practice is still encouraging patients to have flu vaccinations. If you have still not had one and are eligible, please do contact the practice to make an appointment.

Next meeting: To be arranged and will be held virtually via Zoom. If you would like to join the zoom meeting please email our chairman at s.j.gilson@btinternet.com who will send you a meeting invite.

Patient's Participation Group

FOUND A £10 note—
whilst walking the dog in
Lode. Might it be yours?
Contact Susan on the Lode
Star email address.





**Your nearest Defibrillator
is on the WALL of
PASSAGE HALL**



**Want to see the
photos in colour?
Want to click directly
on to a hyperlink
in the magazine?**

Go to www.lode.org.uk
to view all the Lode Star
magazines since January 2014

LODE 11 STAR

Good News

I have successfully applied for and been awarded a small grant to run wellbeing projects via our Lode with Longmeadow Community Group on WhatsApp.

Text me, **Teresa on 07812 243732** if you'd like an invite to join. We're a pretty friendly group who help each other keep up to date on local news, offer items and share issues.

The grant will help fund a few initiatives that I would like to make happen in the near future, as soon as the pandemic allows. I am writing to let you know of my intentions and so that I may have the opportunity to hear from you if you have any concerns or advice and/or if you would like to get involved.

The three projects are:

1. A wellbeing booklet
2. Adventure project for teenagers
3. Open Gardens in June

All of the projects will be low-key for local people only and will adhere to strict Covid 19 guidelines. I'm



hoping that each will bring a little joy to people in Lode with Longmeadow by giving us something to look forward to, something to get ready for and maybe even a role in making them become a reality.

I look forward to hearing from you,
Teresa

STOP PRESS

We are happy to invite families on behalf of young people currently in Yr7 to Yr11 to get in touch: teresa@2spaces.co.uk to express an interest in joining an outdoor adventure taster session including practical problem solving, canoeing and inspiring challenges.

The two-hour tasters will be run by www.joyofadventure.co.uk with the aim to encourage young people to attend a longer canoeing and camping weekend away.

Although heavily subsidised by the grant the charge per person will be £10. More information will be shared during a Zoom call and interested families will be notified by email.

'You didn't need us yesterday – but you might tomorrow !'

In the February issue our readers and supporters were notified of the big charity event of the year **Chariots of Fire** – to be held on Queen's Green in Cambridge on Sunday 19th September. I trust it is already in your diaries and that you plan to attend as EAAA is this year's nominated beneficiary. The event has the potential to be one of the largest fund-raising activities for us – funds

CONTINUED ON NEXT PAGE

increasingly desperately needed to support our continuing everyday work.

What do we need from you? Volunteers on the day, lots of you – please – why not enroll as a group?

It should be a great day out, with the added bonus of knowing that your efforts will be helping to raise funds and save lives.

Please do get in touch –

www.eaaa.org.uk – 03450 669 999

As you should be well aware by now, my major objective in writing these missives is to help EAAA raise

money – simple as that.

During 'Lockdown' this has become increasingly difficult with the inevitable consequence that cashflow has considerably diminished

To those who regularly support us by way of contributions and playing our lottery – thank you so much. To those about to write wills, or review them, please consider a gift – no matter how much – again, do contact us to obtain details. Let your legal adviser know.

Together – we save lives.
Michael White



The National Trust

<https://www.nationaltrust.org.uk/>



Anglesey Abbey

Thoughts and feelings of spring couldn't be more welcome after several weeks of bone-chilling temperatures when snowdrops were buried in actual snow and water returned to the monastic fishponds to the delight and shock of many of our team.

In February, Anglesey Abbey remained open for walks and exercise for those in our local community and the snowdrops have, right on schedule, made their appearance.

We've seen an increase in the number of people entering the property via the newly planted Orchard by the Paddocks in recent weeks. One of the important ways we're continuing to manage safety and the number of visitors allowed on the estate at the moment is through

our online booking system, this means it's vital that anyone arriving for their visit comes in via the main entrance where we can check bookings and monitor capacity.



Signs of spring at Anglesey Abbey are here to brighten up your local walk. We are looking forward to exploring the many hidden patches of spring flowers as they continue to emerge through March and April with a downloadable map to help you spot and revisit as many spring flowers as you can.

We look forward to seeing you this spring. Please send us your picture perfect moments of spring by emailing them to angleseyabbey@nationaltrust.org.uk. We would love to see them.

Alexandra Smaridge

One of the knock-on effects of Covid 19 is the peacefulness of the skies above us (as opposed to the A14 !). Very few contrails and little airport traffic. It is, therefore, perhaps more noticeable when one of the EAAA helicopters flies through our airspace. What's happened and where are subliminal questions we might ask – recently even one of EAAA's own doctors – Dr Patricia Mills – needed the assistance of the charity.



NATIONAL SERVICE

PART 2
by Dave Peck

It's 1954 and having undertaken basic training in Bury St Edmunds, Dave is posted with the Suffolk Regiment to Trieste.

Arriving at Rossetti Barracks in Trieste, we were divided into different companies: HQ, A, B, C and D. Three of us from our Minden Platoon at Bury were assigned to the Signal Platoon HQ Company.

The second day we were all gathered together again to be lectured on:

- The out-of-bounds areas
- Drinking too much vino and
- The women of Trieste (!?)

We were then issued with our lightweight summer clothing - short sleeved shirts, short trousers, etc.

We were again in large barrack rooms of 15 to 20 men, and I remember particularly the highly polished red floor tiles.

The Signal Platoon consisted of 50 to 60 men, one officer Captain Kelly (known as Jimmy amongst the lads), one Sergeant Len Drew, two Corporals, Radcliff and Fox, who did all the instructing on the radios and telephones used on manoeuvres, and three Lance Corporals.

After learning about each kind we were put in the section they thought we were best suited. I was put in the telephone section, known as a Line Party of three men.

On manoeuvres the Companies were spread in different areas. Each Company had a telephone so we would have to get a telephone cable

from HQ to each Company, high off the ground if possible. It was a nightmare for the lads from towns as the lads from the country had been climbing trees from a young age, so in training we used to have some good laughs with the lads learning to climb trees, etc!

We were in Trieste because President Tito had caused trouble over who should own Trieste, Italy or Yugoslavia, as it had been in no-man's land for many years.

This meant that if your Company was on Standby Duty you'd all be in your best BD (uniform), full battle order with rifles, ready to go down to Tito Square, circle it with coils of barbed wire to prevent a riot. We did one dry run all the time we were there!

Getting to know the rest of the Signal Platoon did not take long. Quite a few came from East Anglia. Ginger Bryant from Norwich was the first I got to know and he put me in the picture about Trieste and what went on.

The first time he showed me around we went down to the seafront (our barracks were about one mile from the seafront going up towards the border with Yugoslavia) and on the way back to the barracks we passed many bars. At one bar we were stopped by a young lady. Ginger said just listen, she wanted to do a deal. Ginger argued with her and in the end he told her where to go, then he told me she was willing to take cigarettes in payment. He said this would happen to you regularly.

CONTINUED ON NEXT PAGE

Our pay in Trieste went up from 28 shillings a week to 31/-. This was because we got an Overseas Allowance. We also received coupons, one for 80 cigarettes and one for 40 which we could use in the NAAFI at 1/- for 20.

Guard Duty and Fire Picket duty (6 men in each) assembled at 6pm each day on the Barrack square. The Duty Officer inspected both groups, all dressed in best BD, the Guard Duty with rifles - which were given close inspection. A dirty rifle meant big trouble so a clean barrel was necessary. The last thing to be done before going on the square was to use your 'pull through' to ensure the barrel was clean.

A 'pull through' is a length of cord with a thick pad on the end. If you could get one with some gorse on the end this made the barrel shine, but of course such additions are not allowed.

The Fire Picket could sleep but must report to the Guard Room if the fire alarm is sounded.

Guard Duty was from 6pm to 6am with a one hour on, two hours off, routine. Standing down at 6am you were inspected again. The best-dressed soldier on parade gets the night off and acts as the Commanding Officer's Stick Man, an honour.

The Guard for me was one hour on the main gate to check everybody coming in. When we know RSM Ginger was out, the Guard Commander warned that "whatever you do check him in otherwise we will all be in trouble". A young woman came up to me and I could not get rid of her. Knowing the RSM would be coming in I was having forty fits. If

he came in and saw this woman pestering me he might think I was encouraging her. In the end I had to prod her with my rifle and she went. Wow, a little later the RSM came back. I challenged him; his answer was "don't you know me boy?" "Yes sir" and off he went. I hoped my next hour on would be less stressful. Fortunately it was, I was patrolling around the back of the camp.

My second Guard Duty was as guard on an ammunition dump on the hillside of Basovizza above the barracks and close to the border of Yugoslavia. You stood in a watch tower looking over the whole dump with a great view of Trieste. Again, one hour on, two hours off, for 24 hours.

We used to do training exercises in this area. It was impossible to dig slit trenches as it was solid rock but one day the Provo Sgt, making sure we were all hidden, shouted out "Summers (our dispatch rider), cover up that bike." Summers replied "Why, It's not raining Sergeant?" A big cheer from all the lads. I cannot write his reply.

We didn't have a sports area but you could play cricket on the barrack square with a large mat to bowl on.



TRIESTE SEAFRONT
MASON, LANDYMORE, PECK, SUMMERS

CONTINUED ON NEXT PAGE

Some of us would hire bikes and ride all along the seafront. At one point there was a large pontoon in from which you could swim in the sea. Being a non-swimmer that counted me out. Unfortunately there were no sandy beaches in this area as the port was at one end, out of bounds to us of course.

From Trieste we travelled by lorry to a training area in Schmelz, Austria. It was in the mountains and said to be



ON THE WAY TO SCHMELZ

an old prisoner-of-war camp with wooden huts. This must have been May/June time.

Dave Peck

To be Continued

← **Unable to report on the happenings of Bottisham's Library and WI and the Gardening Club, Sylvia has found the following excerpts which uncannily reflect the current situation**

One is an excerpt from @Pepys_Diaries on Twitter, pretending to be written in London in 1664 "On hearing ill rumour that Londoners may soon be urged into their lodgings by her Majesty's Men, I looked upon the street to see a gaggle of striplings making fair merry, and no doubt spreading the plague well about. Not a care had these rogues for the health of their elders".

Did you know that Robinson Crusoe was on his island for 28 years, 2 months and 19 days? His journal records how he made his peace during those uneventful days without end.

"But what need I have been concerned at the tediousness of anything I had to do, seeing that I had time enough to do it in? Nor had I any other employment,

at least that I could foresee, except for ranging the island to seek for food, which I did more or less, every day".

Substitute a weekly shop at Waitrose or an occasional foray to the local Co-op and that pretty much sums up my existence for the last 11 months.

Perhaps we should do much as Robinson Crusoe did to try and master his despondency.

"He comforted himself by totting up the comforts he enjoyed against the miseries he suffered."

Makes sense I think.

Thinking of Robinson Crusoe could I recommend that you tune in to Desert Island Discs on I-Player. There are many, many episodes of interest with lots of varied contributors over the last 75 years. It certainly takes your mind off the ironing.

Sylvia Overton



Our District Councillors' REPORT

Snowdrops are out which means Easter is on its way. This means that there will be

temporary changes to the waste collection dates.

As there will be no collection on Good Friday, all collections in the week beginning 29 March will be a day earlier than usual (if your collection is normally a Monday, it will be collected on the previous Saturday). There will also be no collection on Easter Monday, all collections in the week beginning 5 April will be a day later than usual.

And after Easter, it must be time for elections. **On Thursday 6 May we will be voting for our County Councillor, Police and Crime Commissioner and Mayor.**

Covid may bring additional challenges to attending the polling station, so you may want to arrange a postal or proxy vote. With a postal vote, the Council will post you your ballot with a pre-paid return envelope, you vote before election day, so that your ballot is delivered back to ECDC by polling day. With a proxy vote you nominate a trusted person to cast your vote for you at the polling station. You can get the forms to apply for postal or proxy votes on-line <https://www.eastcamb.gov.uk/elections-voting/ways-vote> or by email

Democratic.Services@eastcamb.s.gov.uk or phone the Elections Office 01353 665555.

The Finance and Assets Committee discussed the budget for 2021/22.

Although the draft budget for next year is balanced, by drawing funds from reserves, by 2023/24 the Council will have a budget shortfall of £4.6 million on a total net expenditure of £12 million. The Finance Manager "strongly recommended that early consideration is made as to how savings in future years will be made."

The Committee also approved the **Climate Change Supplementary Planning Document (SPD)**.

There were many comments from individuals and groups that felt that the SPD did not go far enough to counter climate change, with interesting and thoughtful contributions, and we hope that most of these suggestions can be incorporated into the new Local Plan. Unfortunately, an SPD cannot go beyond the provisions in the current Local Plan, but it does contain some useful guidance. We were disappointed that several large housing developers had sought to water down the proposals.

The Operational Services Committee renewed the grant to the Newmarket CAB, but for one year only. The paper presented to the Committee recommended that:

'Once the pandemic and its associated restrictions ease, the Council's Housing and Community Advice service will seek to create a housing and advice hub in the Newmarket area.'

We are concerned by this because many people are more comfortable going to Citizens' Advice than they are going to the Council, because they see Citizens' Advice as independent. We therefore think the grant should be continued in future years.

continued on next page

Our next virtual District Councillors' Surgery will be on Wednesday 24 March at 6.30pm, followed by meet your Councillors from 7.00pm. The Zoom meeting ID is 631 542 4066 and the passcode is 938720.

Charlotte Cane, 34 Swaffham Road, Reach, CB25 0HZ 07976 607 512
m.me/charlottecanelibdem
charlotte.cane@eastcambs.gov.uk

John Trapp, 104 Commercial End, Swaffham Bulbeck, CB25 0NE
 01223 812120
john.trapp@eastcambs.gov.uk



Public Transport Matters

Local buses are still running but mainly empty as we all cope with lockdown. Some park and ride services are suspended. Schools being closed or with fewer pupils also affects the bus companies.

The Parish Council is seeking involvement in any transport matters being considered by the Greater Cambridgeshire Partnership which involve our eastern villages.

Villages west of Cambridge are worrying about the route of the planned east - west rail link as too costly and least direct.

There is talk of Westley Green, a garden city between Cambridge and Newmarket.

Coach companies are offering summer holidays but there is no certainty as to whether we will be able to go on these.

Soham new train station should be open by the end of the year. Doubling the railway line at Newmarket remains a priority for representatives of the racing and business community determined to improve the town's connectivity.

Kent residents are asking for a rail link to Cambridge. Kent County Council

has suggested a Thameslink service from Maidstone East to Cambridge. This would stop at Blackfriars and St. Pancras.

The arguments about HS2 continue - route, costs. Some other lines closed at the time of the Beeching cuts - £750 million to reinstate services between Bicester and Bletchley and £34 million to reopen the line between Newcastle and Ashington.

Diesel fumes at stations is to be monitored in at least 100 stations due to idling diesel engines.

The rise in rail fares is causing an angry response.

The UK will not take the lead in rescuing Eurostar which is majority owned by France. The number of passengers is down by 94%. The government sold its 40% stake in 2015.

Wrightbus is on the road to recovery. They are producing hydrogen powered buses.

Rail info - 08457 48 49 50
 Traveline - 0871 200 22 33

Happy travelling - take care and keep safe and well.

Paddy James

The Charity of Strangers

I wanted to share with the readers a chance meeting that I had, that has restored a little bit of my faith in humanity.

On the second Friday of January, I decided, rather last minute, that I needed to make a dash into Newmarket to purchase some items needed for the village foodbank.

A Friday after work would not be my usual choice of shopping day (usually a *get home and be thankful it's over* kind of choice!). But, fate has a way of putting us into situations that we are not expecting or planning. Sometimes these might have a negative outcome but every once in a while, a great big positive hits you!

So, there I am, slightly dishevelled looking, dressed in a big warm coat, festive reindeer leggings and a pair of Crocs; trying to maintain social distancing and whizz around a great value store in the High Street. When, by chance, over the dog food aisle I strike up a conversation with a friendly lady, also buying dog food. We ended up traversing the aisle and managed to discuss the doom and gloom of Covid 19, Lockdown 3.0 and the merits of being able to purchase well-priced, good value items!

The conversation led onto how I was shopping for our village foodbank which had over the months had started to become a valued and much needed resource for those in need. To my surprise the lady told me that the company she worked for were looking for local charities and groups that they could give support to. She thought that our foodbank might be a worthy cause.

At this point we introduced ourselves, I gave her the village Facebook page and told her that the details of the **Lode with Longmeadow Food Bank Go Fund Me** were on it. We parted company with the promise from Sarah that she would look us up and help us out. I felt buoyed up, not just by the offer of a donation but by the uplifting conversation that I had had with Sarah.

Fast forward a week and I received a message from Sarah to tell me that the company she worked for '**Metaswitch**', would be making a donation of £170 to the Go Fund Me account. This almost doubles the amount that had been raised to date. And to boot, Sarah has even offered in a personal capacity to help continue to raise funds for the food bank if needed.

A heartfelt thanks (from myself on behalf of our community) go out to Sarah Kiteley and Metaswitch and of course fate for throwing us together in the dog food aisle.

Meleena Walsh (Parish Councillor)

SUDOKU No.167a SOLUTION

8	5	4	9	6	1	2	7	3
9	6	7	2	8	3	4	1	5
1	2	3	5	7	4	9	8	6
6	7	8	1	9	2	3	5	4
2	4	1	8	3	5	6	9	7
5	3	9	7	4	6	8	2	1
3	1	5	4	2	9	7	6	8
7	9	6	3	5	8	1	4	2
4	8	2	6	1	7	5	3	9

Walk your walk to help carers to attend COVID-19 vaccinations



Local charity **Caring Together** is providing free and tailored support for people looking after a family member or friend, so they and the person they care for can get to their appointment for the COVID-19 vaccination.

And they are inviting you to walk your walk for carers this March to raise money so that they can continue to provide this and other support to carers during the coronavirus pandemic.

Whether you choose to set yourself a challenge based on the number of steps you walk, the distance you want to cover or the amount of time you spend walking you can raise money to help carers.

People who are most vulnerable are being prioritised for the COVID-19 vaccination, and as the priority categories are worked through people looking after a family member or friend will also then be invited for their own COVID-19 vaccination.

But whether it is the appointment for the person they look after, or for themselves, carers face many challenges in getting to medical appointments. So, the free support from Caring Together can make the difference in whether they can go to their appointment or not.

Caring Together head of fundraising and engagement, Hannah Crouch said, "The pandemic has had a devastating effect on carers. For many the only light at the end of the tunnel is receiving their COVID-19 vaccination to give them the confidence that they are able to keep their older, disabled and seriously ill loved ones safe.

"We are relieved that carers have been included on the government's priority lists to receive their vaccination. And with your help, we can help carers to get to their COVID-19 vaccination appointments.

"From providing homecare for the person they care for to supporting them with their travel and transport – anything that they need.

"We are asking you to walk your walk for carers this March. Whether you are looking to increase your fitness, make the most of your daily exercise or simply want to give purpose to getting out and about: every step you take will help support carers in your local community during the coronavirus crisis."

Signing up to the challenge is completely free and there is no minimum sponsorship that we ask you to raise to take part. If you pledge to raise £50 you will be sent a **Caring Together** T-shirt and if you raise £100 they will send you a water bottle to say thank you.

You can find out how to create your walk your walk for carers challenge at caringtogether.org/walkyourwalk or email fundraising@caringtogether.org

If you are looking after a family member or friend and want support getting to your coronavirus vaccination appointment please contact **Caring Together** by email hello@caringtogether.org or on 0345 241 0954.

Caring Together supports carers across Cambridgeshire, Peterborough and Norfolk, to provide information and advice, run services in local communities and campaign so that carers have choices.

TAKEAWAYS AVAILABLE
Friday night 6-8pm Sundays 12-3pm
Delivery available

Call Sarah Sturges on 07715 257 776
 or email sarahsturges2017@icloud.com



St James' Church Plant Stall

We plan to run a plant stall throughout the spring and summer to help with the cost of our roof repairs.

We'll be selling seedlings, plants, fruit, veg and flowers. If you would like to donate any spare plants etc., please drop them off at the church, labelled if possible, and we'll find a good home for them.

Thanks for your continued support.

Village Freecycle

Everything is free and nothing is expected in return.

If you have any offers or wants, please contact me before the 14th of each month by phone (01223 813362 / 07980 423210), e-mail (junthompson44@gmail.com) or drop a note through the letter box (23 Longmeadow). Please let me know if you would like anything repeating in subsequent issues.

Offers

- Approx. 3 cubic feet of polystyrene beads suitable for filling bean bags etc. Sue 07941 871515
- Nikon F50 35mm film camera, dedicated Cobra 700AF flash & Sigma 70-300 lens. Not used recently but should be OK.
 Laurence 07812 369 546
- Pine chest of drawers (H.90cm x W.90cm x D.44cm. Three long drawers and two half width drawers.
 Ian & Mary 01223 811255
- Monstera (Swiss cheese) plants for collection only as I have no transport (sorry). Donations accepted for ATC.
 Theresa 01223 813222

- Tesco home blender 150w new; Packable maroon jacket, breath-able, size large; Black evening bag with a beaded design; Rainbow coloured large umbrella; Gents compact black umbrella with wooden hooked handle; Felt backed waterproof table protector - 82 cms + 107 cms.
 Contact Julie Sale, on behalf of Muriel 01223 81122.

Wanted:

- Your unwanted concert tickets, programmes, flyers, posters. Any condition, any era, any quantity.

Paul 07932 666210



I have been tour guiding in Cambridge for over 29 years, What started as a retirement hobby quickly got out of control.



About 30 minutes in, I had taken them down Senate House Passage, on my way to

the side gate of Trinity College for the spectacular view of Trinity Great Court. The town was very busy, and hordes were on their way down to the river. At one point I decided to check that all my ducklings were dutifully following. Imagine my horror to find that the entire group of 20 had apparently vanished off the face of the earth!

Rapidly ruling out mass alien abduction, I went off in search. There they were, all happily following the wrong hat! They had turned left and were heading off to the river. At least they hadn't had a better offer. I managed to retrieve the situation, among much hilarity.

Sometimes I wish I had just followed them, to see where they might have ended up.

Ian Melvin, Quay Road

Strange things happen on the mean streets of Cambridge which, when you look back on them, are often memorable and often amusing.

The daftest thing that happened to me some years ago, which I believe is unique in the annals of Cambridge guiding, involved me losing my entire party.

It is not unusual to find that someone in the group has lingered to take photographs and become separated from the bunch.

On this particular occasion, a blisteringly hot summer's day, I set out from the tourist office with a group of 20 (the maximum permitted). I was sporting a jaunty panama hat, to ward off the sun's rays.



Cambridgeshire Mobile Library Service

Access to the vehicle will be limited to help keep staff safe. We will be providing books selected in advance.

Reservation service only

You can pre-order books from the library catalogue using the reservation service. This service is currently free of charge.

Select and Collect service

This allows you to request a collection of books based on your tastes. You can use the Select and Collect service online, or by calling **0345 045 5225**. Simply choose the mobile library as a pick up point and order as far in

MOBILE LIBRARY SERVICE

2nd Wednesday of the month

Longmeadow	2.10 - 2.35 pm
Northfields	2.40 - 3.15 pm
Lode Post Office	3.20 - 3.50 pm

Renewals/Enq: 0345 045 5225
www.cambridgeshire.gov.uk/library

advance as possible. This helps ensure that a selection is ready and issued for you to pick up from your stop. (Ideally place your request a week in advance - we will do our best with forms received after this.)

If you have any queries please email us at mobilelibraries@cambridgeshire.gov.uk. Please support your local library service delivered directly to your community.

In March the branch would normally hold its 'Spring Social', but due to the continued social distancing restrictions this will not be taking place this year.

Mothers' UNION
Christian care for families

Anglesey Group

On the 14 March it will be Mothering Sunday and we invite readers to join us in a little piece of light-hearted fun and have a go at the Mothers' Union Mothering Sunday Quiz. Answers below.

Ann Langran



Mothering Sunday Quiz

- What food is most associated with Mothering Sunday?
 - Sunday Roast
 - Eggs
 - Simnel Cake
- In Ancient Greece, which goddess was celebrated on Mothering Sunday?
 - Goddess Artemis
 - Goddess Hestia
 - Goddess Rhea
- 'Mother's ruin' is a common British name for which alcoholic drink?
 - Gin
 - Vodka
 - Brandy
- In which Indian city, did Mother Theresa found her missionary?
 - Mumbai
 - Varanasi
 - Calcutta
- How many cards are sent for Mothering Sunday in the UK?
 - 10 million
 - 45 million
 - 30 million
- In which year did Marie Curie become the first woman to be awarded the Nobel Prize?
 - 1925
 - 1903
 - 1910
- Mother of Pearl is a common name for?
 - Nacre
 - A jewel
 - A stone
- Who was the mother of Queen Elizabeth I?
 - Anne Boleyn
 - Mary Queen of Scots
 - Mary II
- Which popular Mothering Sunday flower do Christians believe were made from the tears of Mary when she wept for Jesus on the cross?
 - Carnations
 - Daffodils
 - Sunflowers
- When did women get the parliamentary vote in the UK?
 - 1918
 - 1917
 - 1916

1. Simnel Cake 2. Goddess Rhea 3. Gin 4. Calcutta 5. 30 million
6. 1903 7. Nacre 8. Anne Boleyn 9. Carnations 10. 1918





RECIPES FROM THE SILVER BANK

Now truly in the middle of the whale-watching season, everyone is settled in.

The calves are becoming more confident and straying further from their mothers, the majority of adult humpbacks have paired off, and the international crew aboard the Explorer are in their whale-working stride. The crew come from all over, Poland, UK, Dominican Republic, Jamaica, Canada and the US.

During the whale season we also have the **Aquatic Adventures** crew who are whale specialists working alongside the permanent crew guiding and running the show, headed up by Tom Conlin from Florida.

Collectively they have thousands of hours' experience on the Bank swimming with the humpback whales and really know how to get close to the action safely.

I love having the extra crew around it makes for a great atmosphere. It's a good job as we live in super-close quarters. So of course it's important to keep them happy.

I like to change around my menu to keep things interesting, cooking everything from Mexican to Turkish, but the one thing I'm not allowed to change (according to them) is my slow-cooked Pork Ribs recipe. So here it is,

Jo Swannell

Sticky BBQ Ribs

Ingredients

1kg baby back pork rib*
For cooking marinade
750 ml light beer or ginger ale or coke
2 tbsp Worcestershire sauce
2 tbsp balsamic vinegar
2 tbsp soya sauce
2 tbsp BBQ sauce (and a little extra for brushing over ribs at the end)
1 red chilli deseeded
4 cloves garlic crushed

Sesame seeds

Method

1. Cut ribs into three-rib portions
2. Place in large roasting tray and season,
3. Mix all ingredients for the marinade in a jug then pour over meat. They should be just about submerged.
4. Cover tightly with tin foil and cook for three hours at 160c or 140c fan.
5. If you have the patience you can cook without the foil and baste them every 15 minutes.
6. the marinade will thicken after two hours so keep basting to avoid your ribs drying out... your ribs will be sticky and not need extra BBQ sauce .
7. I however on the boat I cook covered and then drain the marinade, brush ribs with BBQ sauce and caramalise to finish on the BBQ.... sprinkling toasted sesame seeds before serving.

Enjoy with baked sweet potatoes and crunchy slaw.

* What is the difference between spare ribs and baby back ribs?

Whereas spare ribs come from the belly area, baby back ribs are taken from around the loin, the muscle that runs along the pig's back on either side of the spine. They're curvier and shorter than spareribs with lots of lean meat both between and on top of the bones.

Baby back ribs will cook more quickly, whereas spareribs may need more time to get tender.

INTERNET SEARCH

Litter picking 2021

I would like to thank all those who have gone out litter picking to clear our byways and highways. Lots of people have joined in and the difference is very noticeable. Thank you all. Sadly we did not meet up for tea, cake and gossip but hopefully we can do that again next time.

If anyone is interested, Coral Hatley and I found six 'L' plates along the main road, over a 300m stretch, so there are probably millions more kicking around beside the UK roads.

However, I have them still, so if anyone is about to learn to drive, let me know and I will cycle up and deliver you one for free. They will of course also be in the next jumble sale or stall whichever comes first!

One other fascinating fact is that I have found no carrier bags, so at least that is an improvement.

Feel free to carry on the good work!

Thank you
Fran Platten, Lode Parish Council

Lode and Longmeadow Neighbourhood Watch

Reporting a crime in progress:
999

(if using a mobile dial **112**)

Reporting a crime after the event:
Dial 101

We strongly recommend you report crimes for two reasons:

1. You need a crime report number if you wish to claim on your insurance
2. Reporting a crime automatically places that crime on the statistics

NHW encourages villagers with broadband access to join Ecops at

<https://www.cambs-police.co.uk/myneighbourhood/ecops/>

NHW Co-ordinators

LONGMEADOW

Lis Miles -----811233

LODE ROAD & NORTHFIELDS

Pip Lane-----811944

HIGH STREET, THE PASSAGE & ABBEY LANE

MILL ROAD

Mike Parrish-----811356

FAIRHAVEN CLOSE, WILLOW GROVE & STATION ROAD

Ellis Weinberger.

LODE FEN

Denis Moules -----811918

ST. JAMES' CHURCH LODGE with LONGMEADOW

- Unfortunately at the time of writing this article we are still not allowed to hold live services.
- We have Sunday Morning worship at 10.30 am on Zoom. The link for this is available from me or our Benefice secretary, Dee Noyes by emailing admin@angleseygroupparishes.co.uk.
- The Lent course this year is following the course "Worship in the Wilderness"
- Rev'd Sue Giles leads a short worship session each weekday evening at 7pm on zoom.
- Hopefully we shall be able to hold some live services over Easter.
- The church has remained open daily for private prayer.

We have been busy dealing with some repairs to the church roofs

At the end of 2020 we noticed that the condition of the Parish room roof had deteriorated considerably. Several of the roof tiles were shaling, allowing the rain to run down the felt and the outside wall.

Our architect advised us to have emergency repairs done to the roof to stop any further damage by the rain. This would then give us time to put



together a plan for getting the roof repaired.

The architect has put together a schedule of work for the Parish room roof to be striped, re-felted and tiled. At the same time we will have the lower section of the vestry roof re-felted and the existing tiles replaced.

As our quinquennial report is due this year (5-year building inspection) the PCC has decided to have all the gutters, fascias and barge boards repainted. At the moment we are getting quotes for the work to be done. We can then look for funding. We are hoping to get the work done before the end of this year.

A roofing company came to do the emergency repairs on the Parish room roof at the beginning of January. Fortunately we had some spare roof tiles that they could use.



While they were at the church we asked them to look at a couple of small repairs on the porch roof. One of the jobs was to replace

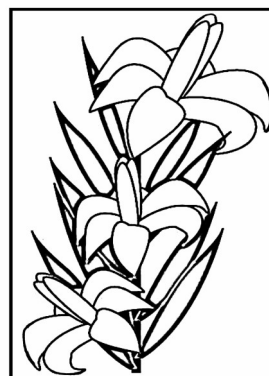
ST. JAMES' CHURCH LODGE with LONGMEADOW

Vicar: Rev'd Sue Giles, C.812726 suethovic@btinternet.com
Churchwarden: Julie Sale, C.811222 juliesale0@gmail.com
<http://angleseygroupparishes.co.uk/>



The **ANGLESEY GROUP OF PARISHES** comprises:
Holy Trinity Bottisham, St Mary's Quay, St James' Lodge, St Mary's Swaffham Bulbeck
and St Mary's Swaffham Prior

For funerals please contact the vicar directly. For weddings please contact:
admin@angleseygroupparishes.co.uk



EASTER LILIES

Sadly, last year we were unable to decorate St James' church with lilies at Easter due to closure of the church during the first coronavirus lockdown.

Although many things are still uncertain we plan to go ahead this year as the church now remains open. It is hoped that by Easter some live services will have resumed.

If you would like to make a donation towards the lilies, perhaps in memory of a loved one, please let me know. As a guide for donations you may like to know that lilies cost approximately £3 each.

Thank you, Ann Langran Tel: 812797

some lead flashing around the metal cross on the top of the porch roof. Alarmingly the cross came away in their hands. The rain water had been getting into the gap on the roof. The battens that the cross was attached to were rotten.

Mike Hatley has extended the fixing legs of the cross so that it can be fixed more securely to the roof battens. We are now waiting for the company to return to complete the work.

New Kitchen, disabled toilet and store cupboard

Our architect has been working on new plans for these items in the nave. We sent the first draft plans to

the DAC in Ely. They have made several recommendations which we need to discuss with them. As with all these things progress is always very slow. It is important that we take advice from all concerned so we come up with the best workable plan.

Julie Sale church warden



A free phone line of hymns, reflections and prayers



OUTSIDE INFORMATION

Cambridge code (01223)
unless otherwise indicated

BOTTISHAM MEDICAL PRACTICE : 810030
Monday to Friday 8.30-18.00 Saturday CLOSED
When Surgery is closed for medical help please ring 111
BROUGHTON HALL..... In an emergency: 999 or Swannell 811584
CAMBRIDGESHIRE **POLICE** **Emergency 999**
Non-Emergency www.cambs.police.uk 101
Crimestoppers 0800 555 111
LODE PARISH COUNCIL Chairman: Robert Stevens..... 811643
Clerk: Jonathan Giles lodeparishclerk@gmail.com 07789 012 761
ST. JAMES' CHURCH, LODE Churchwarden: Julie Sale 811222
LODE CHAPEL Alan Brand alanbrand77@icloud.com 812558
ST PHILIP HOWARD CATHOLIC CHURCH, Cherry Hinton 211235
LODE SHOP & POST OFFICE 811927
PASSAGE HALL Bookings - Julie Sale juliesale0@gmail.com 811222
THE SHED, Pub & Restaurant info@the-shed-pub.co.uk 812425
1st Bottisham RAINBOWS/Bottisham BROWNIES 811055
MEMBER OF PARLIAMENT: Lucy Frazer 020 7219 3000
lucy.frazer.mp@parliament.uk
CAMBRIDGESHIRE COUNTY COUNCIL Shire Hall 0345 045 5200
County Councillor Mathew Shuter 01638 508729
EAST CAMBRIDGESHIRE DISTRICT COUNCIL 01353 665555
District Councillors: Charlotte Cane .. 07976 607512. John Trapp 812120
SANCTUARY HERWARD HOUSING 0800 131 3348
BOTTISHAM SCOUT HUT for hire bottishamhuthire@outlook.com
BOTTISHAM VILLAGE COLLEGE 811250
BOTTISHAM VILLAGE COLLEGE Adult Learning 811372
BOTTISHAM PRIMARY SCHOOL..... 811235
SWAFFHAM BULBECK PRIMARY SCHOOL..... 811595
BOTTISHAM COMMUNITY LIBRARY..... **812354**
NATIONWIDE **RAIL TIMES**.....08457 48 49 50
TRAVELINE (Local transport information)0871 200 22 33
STAGECOACH CAMBUS CUSTOMER SERVICES.....423578

WASTE & RECYCLING MARCH

Thursdays except

☐ Box—Refuse & Blue lid
No box—Refuse & Green lid

4 11 18 25 31

○ = **CHANGED DAY**

domestic and sexual abuse helpline
0803 802 1414
Freephone confidential 24/7 helpline
Call now.
chahelpline.org

MOBILE LIBRARY SERVICE

2nd Wednesday of the month

Longmeadow 2.10 - 2.35 pm
Northfields 2.40 - 3.15 pm
Lode Post Office 3.20 - 3.50 pm

Renewals/Enq: 0345 045 5225
www.cambridgeshire.gov.uk/library

The Silver Line
helpline for older people
0800 4 70 80 90

EMERGENCY

Gas 0800 111999
Anglian Water 08457 145145
Electricity 0800 783 8838

Environment Agency incident
River hotline ... 0800 80 70 60

FRANK
0800 77 66 00
talktofrank.com
Friendly, confidential
drugs advice

HELPLINE
116 123 (FREE)
samaritans
IN CONFIDENCE
jo@samaritans.org

ChildLine
0800 1111



ROUTE 11 BUS SERVICE

NO SERVICE ON SUNDAYS AND BANK HOLIDAYS

14 JUNE 2020

(E&OE)

+ = Serves Lode Church



From LODE x-roads to CAMBRIDGE

Monday to Saturday

0646, 0706(Sat:0716), 0749(Sat:0746), 0933,1029+,
1133, 1229+, 1333, 1429+, 1533,1633, 1733, 1833

Longmeadow bus shelter: Up to 4 mins earlier than these times

From LODE x-roads to NMKT & BStE

Monday to Saturday

0717, 0817, 0917+, 1017,1117+, 1217, 1317+,
1417, 1517+, 1617, 1742+, 1842, 1942

Longmeadow bus shelter: Up to 4 mins later than these times

From CAMBRIDGE to LODE x-roads

Monday to Saturday

0650, 0750, 0850+, 0950, 1050+, 1150,
1250+, 1350,1450+, 1550,1715+,1815, 1915

From BStE (via NMKT) to LODE x-roads

Monday to Saturday

Starts B'will 0619&0639, Starts Nmkt 0656&0840,
0905(0940)+, 1005(1040), 1105(1140)+,
1205(1240), 1305(1340)+, 1405(1440),
1505(1540),1605(1640), 1705(1740)